

## Yonim Cave

By: Nimrod Nachmias & Ran Shadmi  
Contact: [guidebook.il@gmail.com](mailto:guidebook.il@gmail.com)



### Tech

**General crag grading:** ★★

**Rock:** Limestone, pretty solid.

**Routes length:** 10-25 meters

**Routes quantity:** 32 bolted. No trad lines.

**Season:** All year, though the crag is facing south meaning summer climbing can be a bit limited.

**Shade:** In summer, shade covers the Dome sector starting at about 14:00, then travels to the rest of the crag. Shade in winter starts at 12:30-13:00,

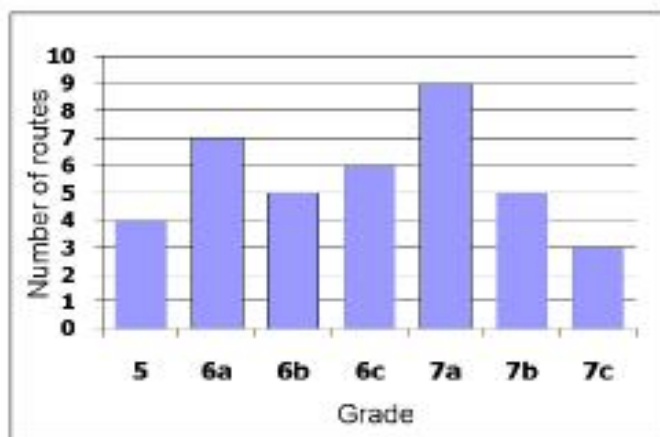
though it's possible to climb in the sun. The cave will always be shaded as opposed to Hamsa sector which only gets shade late afternoon.

**Gear & conditions:** After heavy rains, the place can be muddy and you might find some routes wet. Still, there will be plenty for you to do. No special gear is needed, 50m rope will be enough.

**Cellular coverage:** yes

**Camping:** It's possible to camp just under the Dome sector, but please try to avoid lighting a campfire there - that can later on be an unpleasant disturbance to the other climbers.

**Things to do around:** Near Gilon junction you can find Beit HaEmek park which is equipped with picnic tables, some walking trails, lots of shade and even running spring water in the months following the winter. When heading south from Gilon junction, you will immediately see it on your right. Other than that, Gita cliffs are not far away...



### Getting There

From Yagur junction near Haifa, head north on road 70 toward Somekh junction, where you turn right and immediately left towards Ahihud junction, on road 70 again. At Ahihud junction turn right and head towards Carmiel. Drive east for 5.5 Km and you will reach Gilon Junction. Turn left as if to enter the gas station. Continue on this road for 1.7 Km. Here you can park your car on the left gravel shoulder. A sneaky walking trail marked white-red-white will lead you left of the road and generally downhill towards Yonim Cave and the crag just by it. The walk is no longer than 10 minutes.

**4X4 and pickups:** you can get even closer; 900m from Gilon Jn. you will find a vehicle trail lowering left of the road and into the valley. Drive on it for approximately 500m while sticking to the right side of the valley. The crag will appear on your right.

**Note:** after heavy rains this option can be muddy. You would probably prefer the first option.



### A few words...

Shortly after **Ofer Blutrich** and **Adam Mahler** spotted the climbing potential in this location in 2002, Israel's finest bolters and climbers "charged" on it. About 90% of the routes established today were all put up during a very short (and efficient) period after the discovery of the place. **Blutrich, Mahler, Shimon Bari, Elad Omer, Felix Slamovics, Oren Nogardi** and **Daniel Katorza** were among the major contributors. Additional routes were later put up by **Max Suster, Boris Ginzburg, Slava** and others. Somewhat over a year later, ILAC organized a climbing event in the place – introducing the new crag to many climbers from all over the country.

This is a very pleasant cliff, offering a good deal of quality routes mostly for those who climb over 6a. For the beginners only a few easier routes exist, mainly in the harsh sun. Since the wall is facing almost perfectly south, sun conditions in the summer will only allow afternoon climbing, although you can always climb inside the cave. Bottom line: It's worth visiting!

### Yonim Cave, So what's really in there?

Yonim (pigeons) Cave is one of the major Israeli prehistoric sites. The cave was inhabited during a long period of time starting from about 300.000 and ending 10.000 years ago. The cave was successively occupied by people of four famous prehistoric cultures – Mousterian, Aurignacian, Kebaran and Natufian. During the Mousterian period earliest modern humans occupied the cave, leaving behind their stone tools and food debris (thousands of animal bones). During the Aurignacian period, modern nomadic hunter-gatherers arrived. Their occupation of the cave is marked by occurrence of the earliest art objects discovered in Israel so far.

The Kebaran and Natufian cultures were developing during the transition from nomadic hunter-gatherers to permanently settled farmers ways of life. During Natufian period the earliest known stone houses were built in the cave and the terrace. The Natufian culture is also famous for the large number of art objects and human graves. Archaeologists believe that interesting findings could still be lying there, waiting to be discovered.

Despite it's name, the Pigeons Cave nowadays is more of a home to fruit bats which are also declared as a rare species in Israel.

---Great thanks to Yossi Zaidner for the info---

### Guide's Key

				Standard bolted anchor
				Bolt
				A "must do" route, Don't miss it!
				Interesting route, recommended.
				Nice to do...
Bolted	Trad route	Hidden		

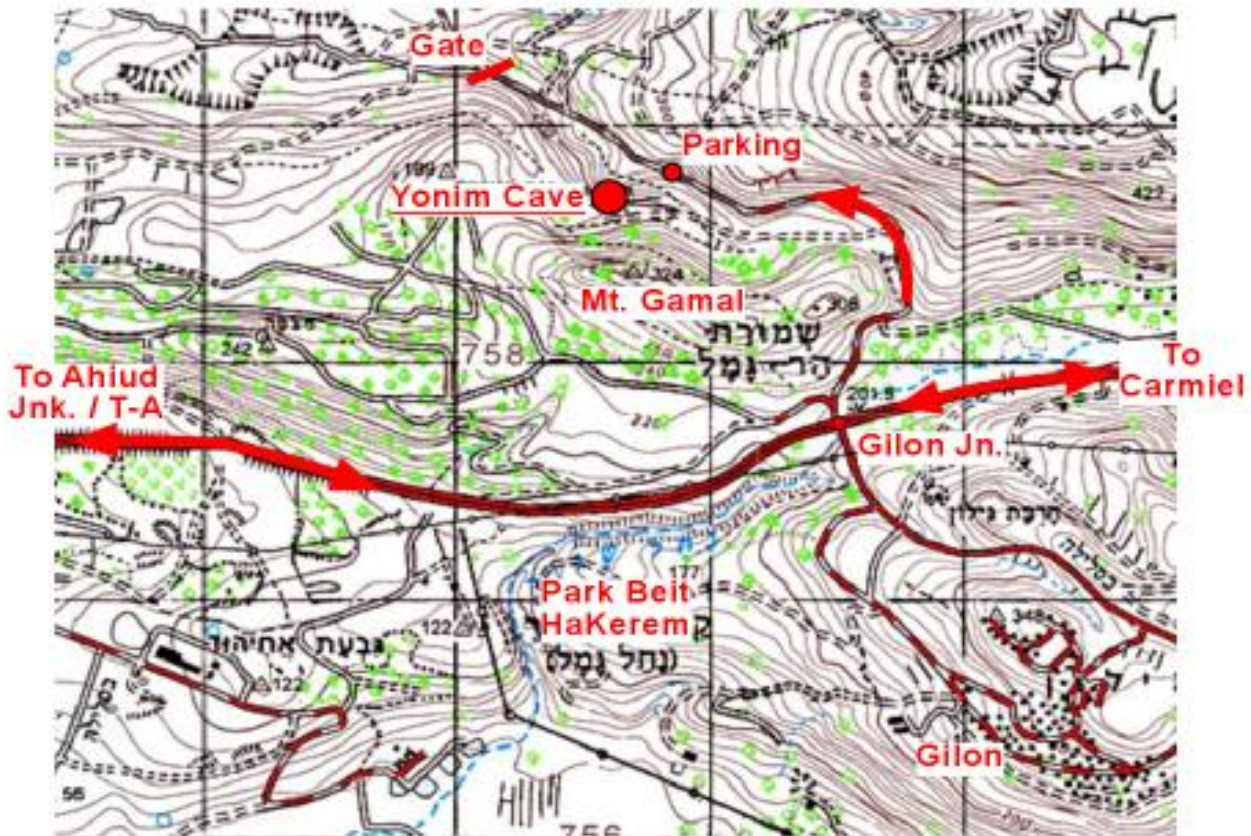


sport route	no bolts	line	(Star grading system is based on author's opinion and climbers rumors only, no responsibility taken...)
-------------	----------	------	---

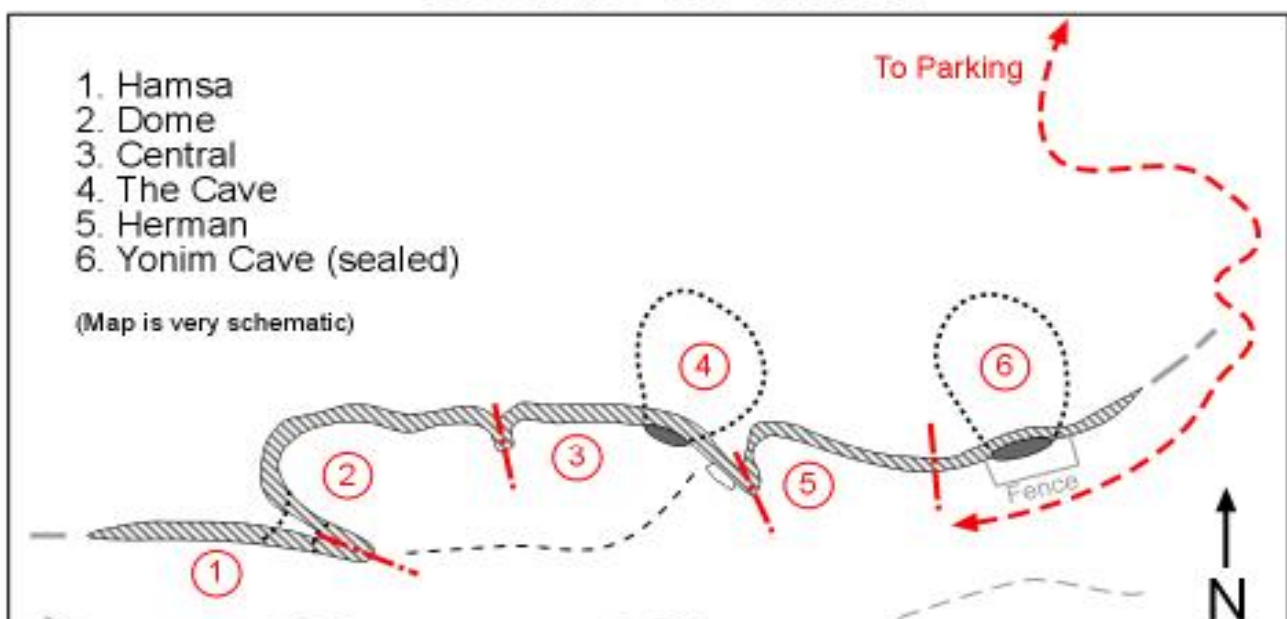
-2-

Rev.2, 2010

## Area Map



## Sectors Overview

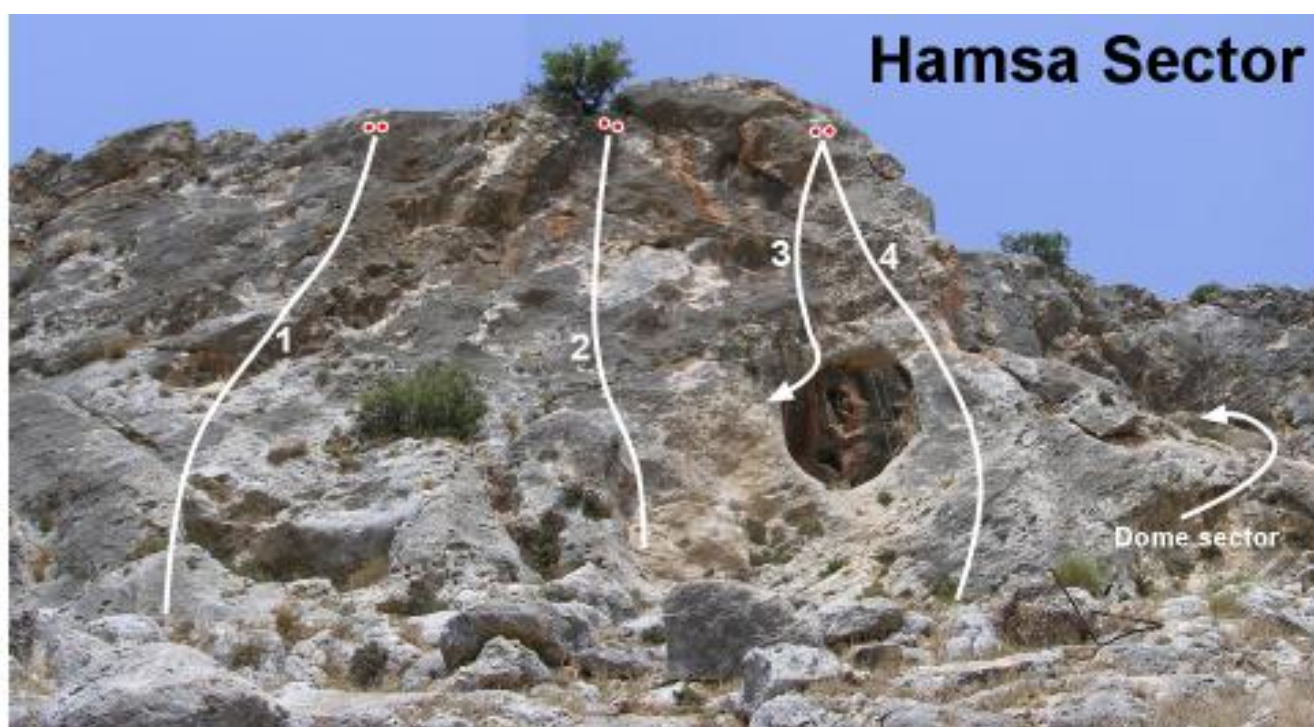






-3-

Rev.2, 2010



Facing completely south this sector never gets any shade, though in winter its nice and warm to be around. You can also put up some very easy topropes left of route #1 (not shown in the picture), there are no anchors for that.

**1. Pokemon: 5+** Max

**2. The return of the Yokonuba: 5+** Felix & Elad Omer 2002.

**3. Over the rainbow: 6c+** ★★☆☆

Starting in the Dome sector and finishing out here, this route is a small adventure. Shimon Bari & friends 2002.

**4. Hamsa: 5** ★★☆☆ Felix & friends 2002.







**Left:** Falcons nesting on "Beauty". Be sure to follow signs temporarily closing the route during nesting. **Right:** Shimon Bari demonstrating impressive flexibility while bolting "Over The Rainbow", Summer 2002. Photo: unknown.

-4-

Rev.2, 2010

## Dome Sector



Under the Dome you'll find shade almost all year long. Early morning it still sees some sun but you can start enjoying the real shade from 13:00 and on. Notice the routes numbers continuity with the Main Sector.

**1. Pendelum: 6b+ ★★** Shimon Bari & friends 2002.

**2. OB's Traverse: 7b ★★**

A nice demanding route with an exciting finish. 2 fixed draws at the top. Ofer Blutrach 2002.

**3. Over the rainbow: 6c+ ★★★**

Climb "over the rainbow and out the window" to finish up in Hamsa sector. Shimon Bari & friends 2002.



**4. Project.** Max & Boris

Short and unclear route to "Gold Finger's" anchor. Max

**5. Gold Finger: 7b+** ★★

Juggy sequence to a hard finger move in the middle. Felix & Ofer 2002.

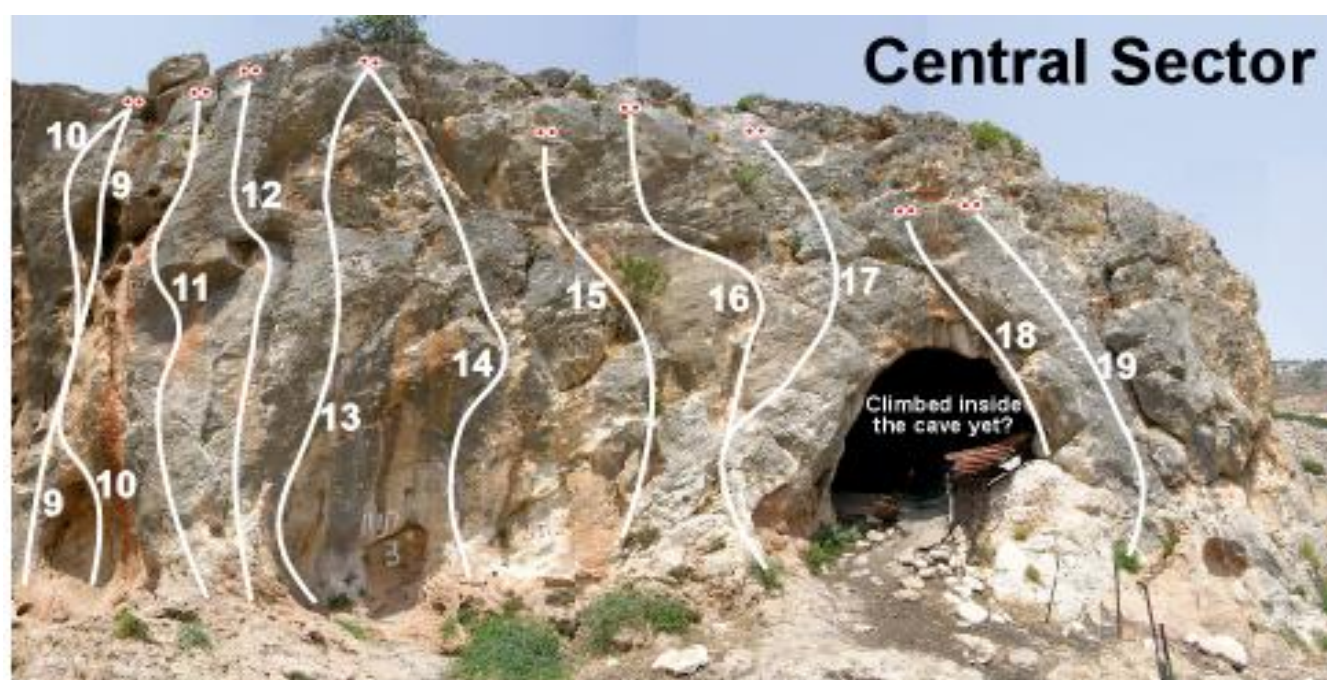
**6. Gold Finger Direct: 7c+** ★★

Climb gold finger, pass the anchor and clip 2 more bolts, then clip the first fixed draw of OB's Traverse, one more bolt to the right and then the anchor. Ofer Blutrich & Daniel Katorza 2007. FA Ofer.

**7. Beasty: 7a+** ★★★ Intense route with a hard and beautiful finger sequence on the tufa. Felix 2003.

-5-

Rev.2, 2010

**8. Beauty: 6a** ★★★

Often referred to as one of the nicest 6a's in the country. Please note that a falcon is nesting on the route almost every year, obey signs on the wall, temporarily closing the route. Shimon Bari 2002.

**9. Alabasha: 6a** ★★

Nice exit out of the cave. Named after a black coffee brand. Max Suster.

**10. The Red Swarm: 7a**

2 red bolts at the beginning and at the top. Boris and Slava 2008.

**11. "Leolam": 6a** Felix 2002.

**12. Sukareta: 6b** Delicate moves on the face, don't run off to the right. Felix.

**13. It's O.K.?: 7a+** ★★ First very hard move towards an easier end. Max S.

**14. Go!: 6c** ★★ First hard move towards an easier end. Felix S.

**15. Take 5: 5+**

Boris and Slava 2008.

**16. Balagan: 7a+**

Delicate crux. Max 2003

**17. Balance: 6a+**

As its name implies - balancy.

**18. Finger Crack: 7a**

Boris and Slava 2008.

**19. Doctor Pita: 6a ★**

Nice and easy. Felix S.

"Climb into the light..."

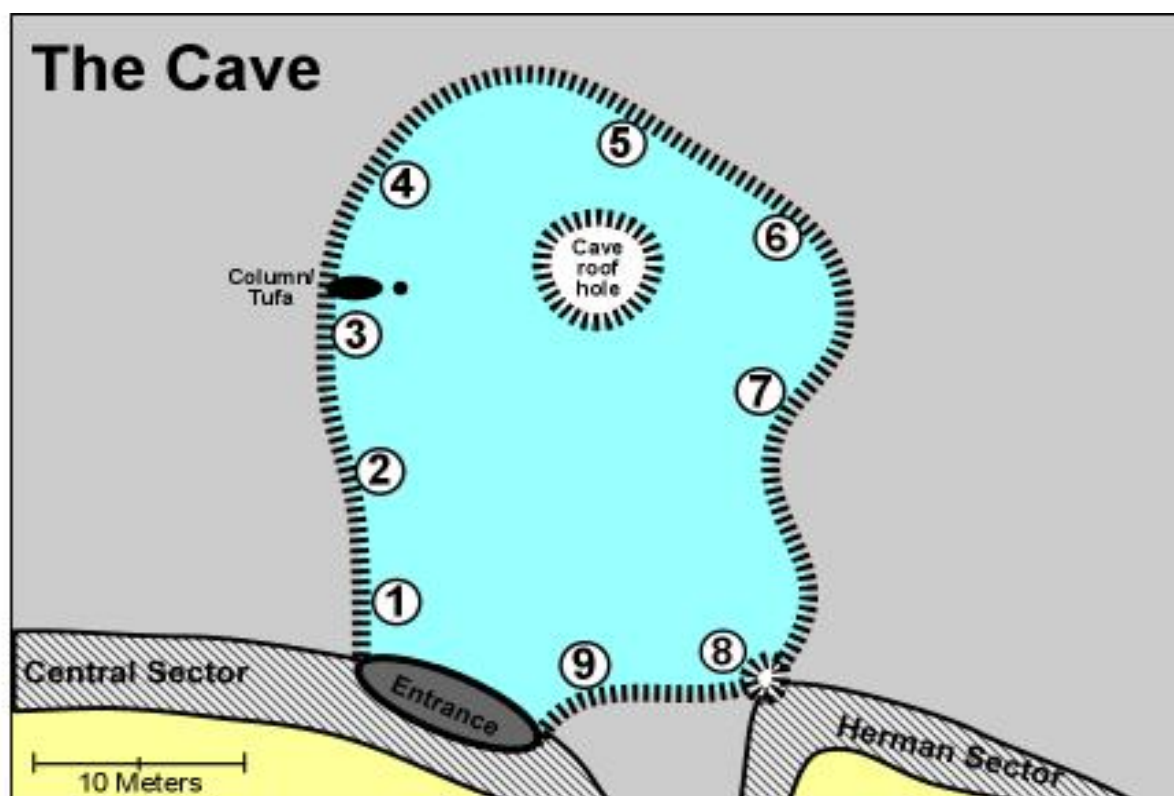
Or Wechsler on Ofer's project inside the cave. Hara-Kiri's window in the background.

Photo: Nir Avney-On.



-6-

Rev.2, 2010



Needless to say, here you can always find complete shade and cool temperatures BUT... nothing is for free, you'll have to stand the "lovely" interior smell!

The routes here are some of the best this crag has to offer - steep overhanging long lines, mostly in the higher grades... enjoy!

- Unless mentioned otherwise, all routes bolted by Max Suster 2008-2009.



**1. White Scorpion: 7a+ ★★**

Traverse above the cave's entrance.

**2. "Best of 80's": 7b ★★★**

Climb up to a nice traverse right almost all the way to the roof hole.

**3. Project** Climbs along the Tufa on the roof





3. Project: Climb along the top of the cave. Ofer Blutrach 2009.
4. "Billy Jean": 7c ★
5. Love and Cough: 7a+ ★★
6. Kakashkin Blues: 7b (?)  
One very hard move...
7. Samurai: 7b ★★★  
Big jugs to a good rest and then a very nice travers right to the anchor.
8. Hara-Kiri: 7a+ ★  
"Hara-Kiri" - also a Hebrew variation of "Shit Wall"... Max and Felix 2003.
9. Night and Day: 7c ★★  
Ofer Blutrach 2009

Unknown climber on "Pendulum" (6b+), Dome Sector. Photo: O. Blutrach.

-7-

Rev.2, 2010



#### 1. The Cut: 6a

Ofer Blutrach got his hand cut while bolting the route. 2002.

#### 2. Herman: 6c ★★★★★

Named after Felix's uncle

#### 3. Blade: 6c ★★

#### 4. Rock Gym: 6b ★★

#### 5. Shaved: 7a

#### 6. Kakashkin Blues: 7b





**6. Katorza's Nest: 6c**

Daniel Katorza was stuck trying to figure out a move for so long, Felix declared him to be a nesting bird on the rock... hence the bizarre name.

**7. The Judge: 6b+**

This route will really judge if you can onsight a 6b+ or not. Felix 2002.

**8. Jerry: 6b**

Just a bit harder than Tom. Felix & Max.

**9. Tom: 6a+ Felix & Max.**


---

Inbal Katznelson on "Alabasha" 6a, Dome Sector.  
Photo: O. Blutrich.